

UN STO~~PP~~ PP ABLE



STUDENT PLANNING GUIDE

THE NATIONAL PRO-LIFE MARCH & SUMMIT

Register now at
ProLifeSummit.com

TABLE OF CONTENTS

Know Your Dates	3
Gain Interest	4
Travel Budget	5-6
Hotel & Food Budget	7
Fundraising	8
Sample Fundraising Letter	9
Map It Out	10
Metro Map	12



KNOW YOUR DATES

The National Pro-Life March in Washington, D.C.

Date:

Time:

Location: National Mall, Washington DC

More information: www.MarchforLife.org

The National Pro-Life Summit

Date: 1/21/23

Location: Omni Shoreham 2500 Calvert St NW, Washington, DC 20008

Register to attend: www.ProLifeSummit.com

The National Pro-Life Summit is the largest pro-life conference in the world. Register now so that you can be a part of a life-changing experience. Both students and adults are welcome to attend!

The National Pro-Life Summit is a one-day event that provides education, training, and opportunities for pro-life activists from across America to network with national leaders who know just how important this Pro-Life Generation is to abolishing abortion in our lifetime.

- Get energized in your battle to protect the preborn and their mothers.
- Learn how to be more effective with saving lives on your campus or in your community.
- Strategize with other pro-life activists from schools and communities nationwide.
- Hear from and meet national pro-life speakers and heroes.

GAIN INTEREST

Advertise

Advertise early to gain interest and recruit as many people as possible to sign up! Talk to your group about the trip early in the school year and make announcements at every meeting to continue growing members' interest. Pass around a sign-up sheet to gain an idea of trip interest and follow up with them promptly. Take time to reach out to other student groups and departments on campus. Consider specifically reaching out to like-minded student groups, campus ministries, and professors who might offer class credit for such a trip.

Hold an Interest Meeting

Hold an interest meeting in September to tell everyone about the trip and why it's awesome! Try to have logistical questions answered beforehand so that everyone can have as much information as possible.

To get everyone focused and pumped up, start the meeting with a video like this wrap up video of the 2020 Summit at **ProLifeSummit.com/Videos**.

Summit registration opens each year in August!
Register your group ASAP since spots fill up quickly!

Don't Stop Talking About It

Share SFLA's social media graphics about the National Pro-Life Summit and the National Pro-Life March in Washington, D.C. with your group to build excitement and more interest throughout the fall. Remember to regularly post flyers or announcements on campus message boards and distribute handouts at your campus outreach events. Use your group's social media pages to post pictures or videos of your group members sharing why they will be attending, and challenge group members to share these testimonies on their personal accounts.

Host an SFLA Fundraising 101 Training

Schedule an SFLA Fundraising 101 training with your Regional Coordinator and invite any interested trip members to attend. Oftentimes, the financial cost of the trip can discourage students from attending. This training will help your members overcome these financial obstacles with practical tips and tricks.

TRAVEL BUDGET

Summit Registration Cost (\$60 per person)

\$60 x _____ attendees = \$ _____

Travel Cost (Flight / Vehicle Mileage / Bus)

Flight

If your group is flying, find an average cost for flights by going to a website like Expedia or Kayak. The best airport to fly into is Ronald Reagan International (DCA) as public transportation is most convenient from this airport. However, Baltimore–Washington Airport (BWI) also has public transportation, despite it being more cumbersome to navigate.

\$ _____ Average Flight Cost x _____ attendees = \$ _____

Vehicle Mileage

To figure out the cost of driving to Washington, D.C., visit Fuel Economy for a calculation on your trip cost: fuelconomy.gov/trip/#?

This website maps out your trip and accounts for the average cost of gas along your route.

Mileage Cost = \$ _____

Metro Fare Calculator for Local Travel

Use the trip calculator here:

wmata.com/schedules/trip-planner

\$ _____ Cost for Local Travel x _____ Attendees = \$ _____



TRAVEL BUDGET

Bus

To figure out a bus trip's cost, we recommend reaching out to two companies we have worked with in the past. They can map out your trip and provide the price for the entire trip, including the cost per attendee.

Mention Students for Life of America when you reach out to them!

Champion Coach

Phone: 1-800-583-7668

Email: charter@championcoach.com

Corporate Travel Service

Toll-Free: 800-727-1999

Contact Form:

<http://www.ctscentral.net/ctimain/contact/>

Special Event Transportation Management

Phone: 1-866-667-9261

Direct Dial: 703-865-8765

Email: specialeventmanagement@gmail.com

Total Bus Cost = \$_____



HOTEL & FOOD BUDGET

Hotel Cost

Most hotel rooms can hold four people, and some can hold five with a rollaway bed. Depending on the size of your group, you may be eligible for a group discount at a hotel. Below is an average cost estimator. To save money on accommodations, contact your SFLA Regional Coordinator for help finding a host home within the DC area, or consider an Airbnb. If you want to stay at the Summit hotel venue, go to ProLifeSummit.com for details on special rates through our event room block.

\$_____ hotel per night x _____ # of Rooms x _____ # of Nights = \$_____

Food Cost

Calculate an estimated amount for the cost of food per traveler.

\$10 per meal x _____ meals = \$_____

Total Trip Cost

Once all the expense items are filled in, add them together to determine the overall cost for the trip. This is the number you will need to use when reaching out to adult supporters like alumni, friends & family, Knights of Columbus, or your local Diocese to ask for help with funding. Round numbers up to create an emergency buffer for your trip.

Registration \$_____

Travel \$_____

Hotel \$_____

Local Travel \$_____

Food \$_____

Total Trip Cost \$_____



FUNDRAISING

School Fundraising

Some schools will give recognized student organizations funds for trips and conferences. Talk to your Student Government Association or your administration to find out how to apply for funds.

Some schools will not sponsor a trip to a national pro-life march but will sponsor the National Pro-Life Summit since it is considered educational.

Find out what forms you need to submit, when they are due, and what kinds of trips or events are typically funded by your school. This will help you to obtain a good idea of what to put on your application.

Group Fundraising

While you may receive funding from your school, it may not be enough to pay for the entire trip. To offset costs, plan group fundraising activities. Fill in the provided budget sheet (pages 5–7) and start brainstorming fundraising ideas.

At some schools, you may need to get fundraising event ideas approved. Here are a few ideas to get your fundraising creativity flowing:

- Host a Krispy Kreme Fundraiser
- For schools with uniforms, organize a dress down day (where each dressed down student pays \$1–3)
- Hold a holiday raffle with great prizes
- Directly ask local churches or Knights of Columbus groups to support your group's trip

SFLA Fundraising 101 Training

To assist Students for Life groups in creating a personalized fundraising plan and provide one-on-one support throughout the planning process, your group can hold a fundraising training with your SFLA Regional Coordinator. Contact your Regional Coordinator to request a free Fundraising 101 training or email Info@StudentsforLife.org.

SAMPLE LETTER

DATE

Dear Name,

I cannot tell you how excited I am to be a part of the Students for Life group at School Name! Our mission is to further create a culture of life on our campus, where students are the target of the abortion industry.

So far, we have recruited new members, received an apologetics training from our Regional Coordinator, and participated in the National Pro-Life Chalk Day. We will be bringing the SFLA Fall Campus Tour to School Name this semester. We are so excited to see hearts and minds changed on our campus!

This January, our Students for Life group would like to attend the National Pro-Life March in Washington, D.C. and the National Pro-Life Summit but we need your help. Can you send a gift of \$100, \$50, or \$25 today? Your gift will enable me to raise the money I need to attend the March and Pro-Life Summit.

Attending the March and National Pro-Life Summit will further strengthen and encourage all of us as a team to stand up strong, with courage and boldness, to abolish abortion!

Our school does not give our group enough funding to completely cover the cost for us to go on this trip. While we can give of ourselves by reaching our campus with this life-saving mission, you can “go” with us by joining our support team!

Every social movement in U.S history has relied on the passion, idealism, and courage of young people. To end abortion in our nation, we must equip ourselves to further accomplish this mission together.

I hope that you will “go” with me to be a voice for life in our Nation’s Capitol and on our campus at School Name.

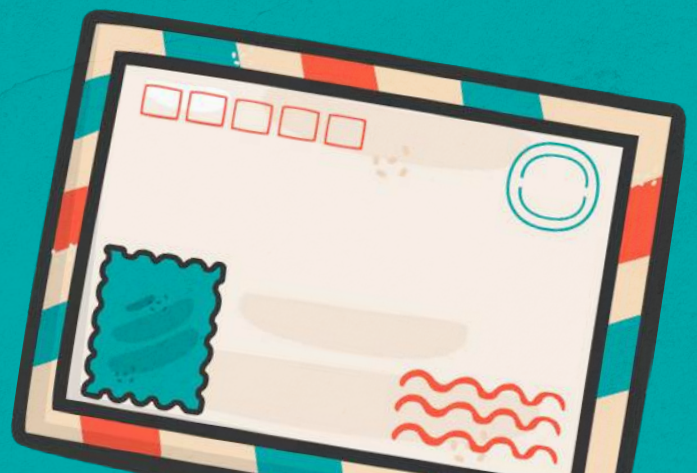
Thank you for considering joining my support team!

For Life,

Name/Signature

President

Students for Life at School Name



MAP IT OUT

If you are driving or considering chartering a bus, reach out to other Students for Life groups in your state. You may be able to get a group big enough to secure a charter bus, a 12-passenger van, or to fill a car.

If You Are Driving

Use Google Maps to get an accurate idea of how long it will take to reach Washington, D.C. Plug in your departure address to the National Mall, Washington, D.C. to find out how many hours it will take to get there. For your return trip, use the address of the Summit Conference (*Omni Shoreham, 2500 Calvert St., NW, Washington DC 20008*) to map to your return location.

Driving hours to Washington, D.C. _____

Driving hours for return home _____

Use the number of driving hours with 60–90 minutes of time padded in for stops, refuels, traffic, etc. to figure out what day and at what time you will need to depart and return.

Date & time of departure to Washington, D.C. _____

Date & time of return home _____

If You Are Chartering a Bus

If you are chartering a bus, contact a bus company right away for quotes. Provide the dates and locations to obtain a quote. Most bus companies require a minimum of 40 paying passengers on a 52-passenger bus, and some will arrange for accommodations as a part of the trip.

Three great companies we have worked with include:

Champion Coach www.championcoach.com

Corporate Travel www.ctscentral.net

Special Event Transportation Management www.specialeventteam.com

Several Right to Life affiliates in your state and many of the Catholic Dioceses charter busses and may open up seating to students. Before you sign a contract for a bus, reach out to see if you can join a bus trip that is already chartered.

If your school has a bus that is made available to student groups, talk to your administration as early as possible to find out the process for obtaining a bus. High schools may require an approval process through their Board of Directors, and will have both permission slip and chaperone requirements.

MAP IT OUT

If You Are Flying

Remember, the easiest airport to fly into is Ronald Reagan International Airport (DCA). You may have to fly in on Thursday and pay for an extra night in a hotel with the higher average costs of flights on a Friday.

Best dates and times of departure to Washington, D.C. _____

Best dates and times of return home _____

Consider Hotel Location

Find a central location to stay, one with parking available, during the entire trip. Determine a location that is easy to find with simple access to the DC Metro. Once you decide on a location, make it your departure and return location.

If you are driving, please note that universities and churches can facilitate short-term parking. This will be especially important if you are carpooling or chartering a bus.

Local Departure / Return Location (address)

Accommodations (hotel / host during stay)

Visit our Summit FAQs page for hotel options and other questions:

<http://ProLifeSummit.com/FAQ>

Address of the National Pro-Life March:
National Mall, Washington, D.C. 20372

Address of Summit Venue:
Omni Shoreham, 2500 Calvert St.
NW, Washington, D.C. 20008



METRO MAP

Download the DC Metro App - available for free in your app store.

